

BOSTON CASE STUDY



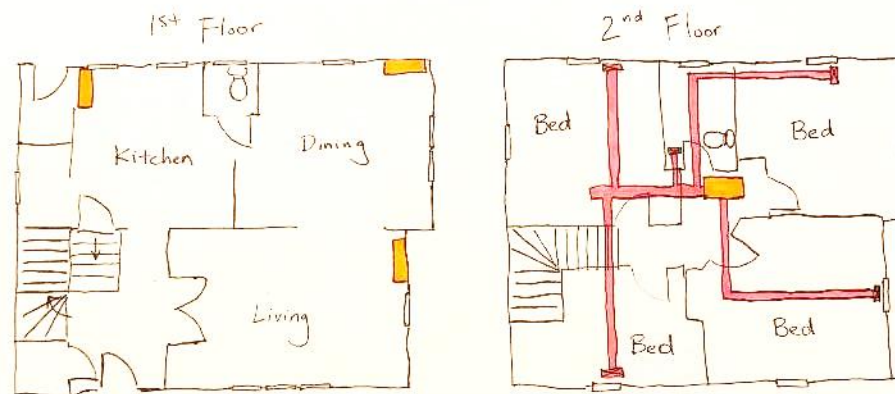
Home:

- Built in the 1930s
- 1,296 square feet
- Weatherization measures: Double pane windows, wall insulation, sprayfoamed the attic
- Heat load: 38,798 btu/hr at 12°F

Previous HVAC: Natural gas steam boiler and window A/C units

Heat Pump:

- Mitsubishi MXZ-4C36NAHZ (42,444 btu/hr at 5°F) with three 9 kbtu wall mounted units downstairs and one mini-duct upstairs
- Installed August 2019
- Cost: \$19,500 (estimated price, homeowner paid less because he did some of his own labor)



Customer experience:

- No issues heating during the coldest days. When the thermostat broke on his gas boiler, he removed this back up heating source altogether.
- For ducted upstairs units he has a wireless temperature sensor which he can move around (e.g., with a guest or working in the office)
- Very happy with wall mount units. Would more seriously consider a ductless unit in every room.
- Much easier to cool the upstairs once the attic was spray foamed (i.e., ductwork was put inside the home's envelope).
- Outdoor unit was mounted against the kitchen wall and it does transmit some noise, just into the kitchen.